

**SPACE.  
IDEAS IN YOUR DIMENSIONS.**

**HAYER & BOECKER**



**DIE DRAHTWEBER**

# WEAVING IDEAS.



## Architectural Wire Cloth for

- Wall cladding and room dividers
- Railings and balustrades
- Exhibition and shop designs
- Sun protection and acoustic systems
- Signage, object design
- Aviaries

Haver & Boecker began producing woven wire cloth in Hohenlimburg, Germany, in 1887. Today, we are one of the world's leading wire weaving companies with a global network of branches and manufacturing facilities.

Our work is based upon experience, continuous research and development of products and manufacturing processes, along with the knowledge and ability of our employees. This combination of tradition and innovation

allows us to meet and exceed the high expectations of our customers.

Versatility and stability, robustness and exclusive optical properties make Haver & Boecker Woven Wire Cloth the ideal material when designing spaces, surfaces and other functional elements for both internal and external applications.

There are many different weave types to choose from which are made from materials especially resistant to weather and mechanical influences. Room-dividing screens, floor coverings and wall panelling can be created as well as balustrades or self-supporting constructions such as aviaries. Combined with wood to create a warm atmosphere, glass or concrete for a high-tech feel, woven wire cloth offers an exciting material contrast that distinguishes large buildings or accentuates smaller architectural solutions. And the play of light and shadow, shimmer and transparency gives each project immense individual character.



**Challenge:**  
Together we identify the specific project requirements in terms of form, shape and function.



**Development:**  
Our team of specialists addresses construction and detail requirements and submits initial solutions.



**Detail planning:**  
With our experience and knowledge all aspects of the project are brought together.



**Production:**  
Precision workmanship using state-of-the-art technology and machinery from start to finish.



**Installation:**  
Qualified logistic partners and installation teams guarantee perfect and on-time installation of Haver & Boecker Architectural Wire Cloth.



**After Sales Service:**  
Cooperation does not end with the completion of a project; it extends into the future with continued support and advice.

## STEP BY STEP TOWARDS YOUR SUCCESS.

Haver & Boecker's process chain provides maximum transparency, flexibility and quality to realize your plans. Through every step of the project a diverse group of specialists is there to support you: The interaction of creativity and technology gives your idea its own individuality.

Not only do you have the confidence of continuous professional service, you also have the possibility to explore new aspects of your design in greater depth, giving you the opportunity to bring new ideas into the process at any given point in time.



**Architect:** LOMA Architekten, D-Kassel

**Type of weave:** EGLA-TWIN 4253

**Application:** Object Design



# WEAVING INNOVATIVE SOLUTIONS.

## CASTLE VLOTHO

Along with the functional and spatial aspects of the wire cloth, the completed design tells its own story. The woven wire cloth forms an effective contrast connecting the past with the present – the medieval masonry and the sheen of the modern elements.

The “Palas” and the telecommunications tower within the ensemble are clad with Haver & Boecker Woven Wire Cloth. Due to the extensive range of design possibilities and materials, the woven wire cloth exceeded all expectations in terms of optical qualities, longevity and cost. The analogy with the metal armour of the “Knights of Old” helps to stimulate the imagination of the visitors.

Haver & Boecker conducted on-site measuring, manufacturing, fabrication and installation of the wire cloth elements.

## CHALLENGE

- Panelling of “Palas”, telecommunications tower and parapet
- Translation of the architectural concept

## SOLUTION

- Development of bespoke fixing systems to suit each application





**Architect:** E.C. Duran, D-Frankfurt

**Type of weave:** FLEXOMESH 9246

**Application:** Object Design

## **MEN'S OUTFITTER "HOSENSCHMITT", FRIEDBERG**

Haver & Boecker delivered ready-to-install fabricated elements.

### **CHALLENGE**

- Privacy from the outside and shadowy transparency from the inside
- Edging detail

### **SOLUTION**

- Selection of the most suitable weave type
- Opaqueness created by the radius and light reflection
- Development of edge protection: double folded edges
- Eyelet fixing detail

## TERMINAL 2, AIRPORT COLOGNE/BONN

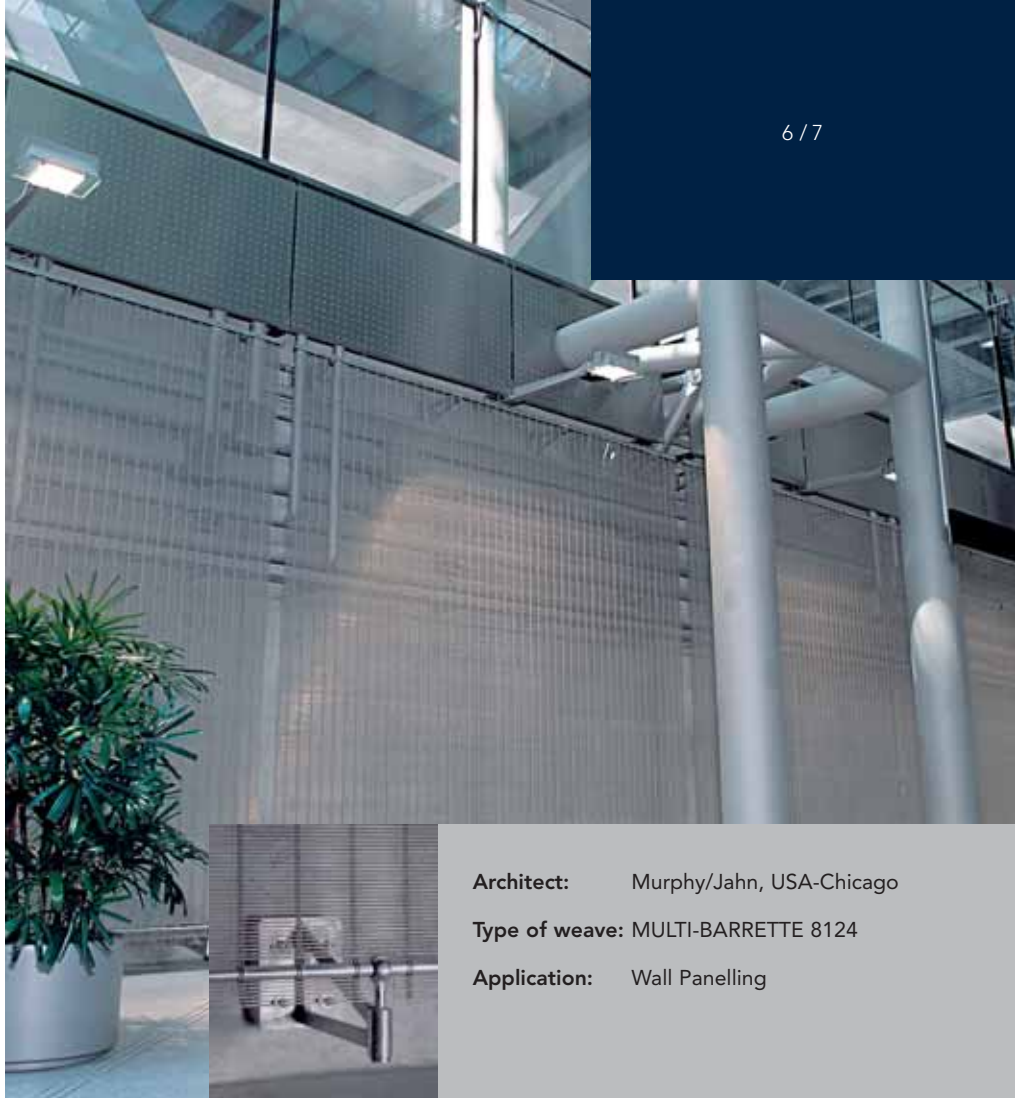
Haver & Boecker conducted on-site measuring, manufacturing, fabrication and installation of the wire cloth elements.

### CHALLENGE

- Wall panelling including installation
- Virtually invisible fixing details

### SOLUTION

- Selection of a dense weave type
- Development of a bespoke fixing system with encapsulated clevis screw



**Architect:** Murphy/Jahn, USA-Chicago  
**Type of weave:** MULTI-BARRETTE 8124  
**Application:** Wall Panelling

## PALEAU DE LA MUSICA, BARCELONA

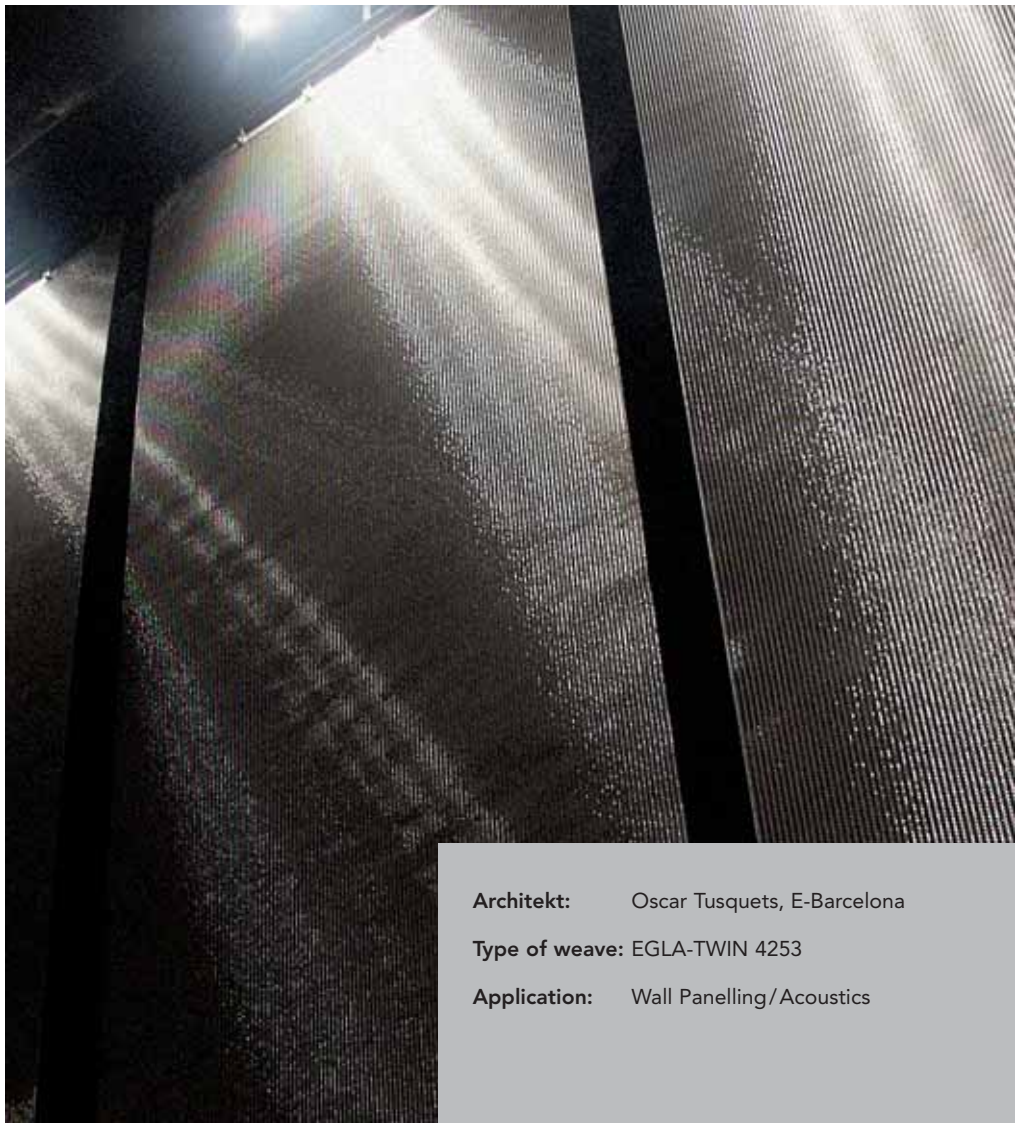
Haver & Boecker delivered ready-to-install fabricated elements.

### CHALLENGE

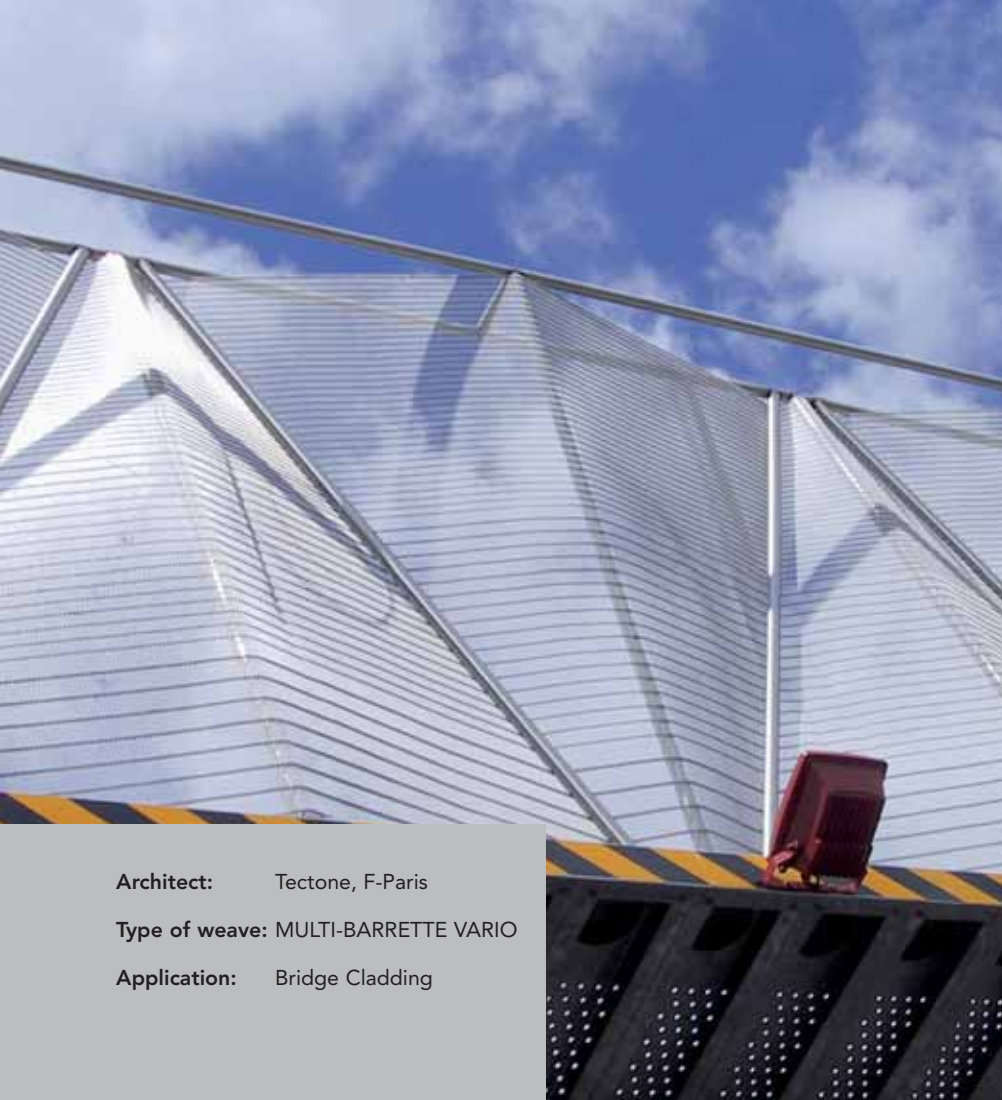
- Improvement of the room acoustics
- Modern, attractive design
- Intensification of lighting effects

### SOLUTION

- Tensioning of single length elements using Haver tension strip and clevis screw method
- Selection of weave types creating varying light effects



**Architekt:** Oscar Tusquets, E-Barcelona  
**Type of weave:** EGLA-TWIN 4253  
**Application:** Wall Panelling/Acoustics



**Architect:** Tectone, F-Paris

**Type of weave:** MULTI-BARRETTE VARIO

**Application:** Bridge Cladding

## PONT DU CHEMIN DE CHAIGNY, SAINT JEAN DE LA RUELE

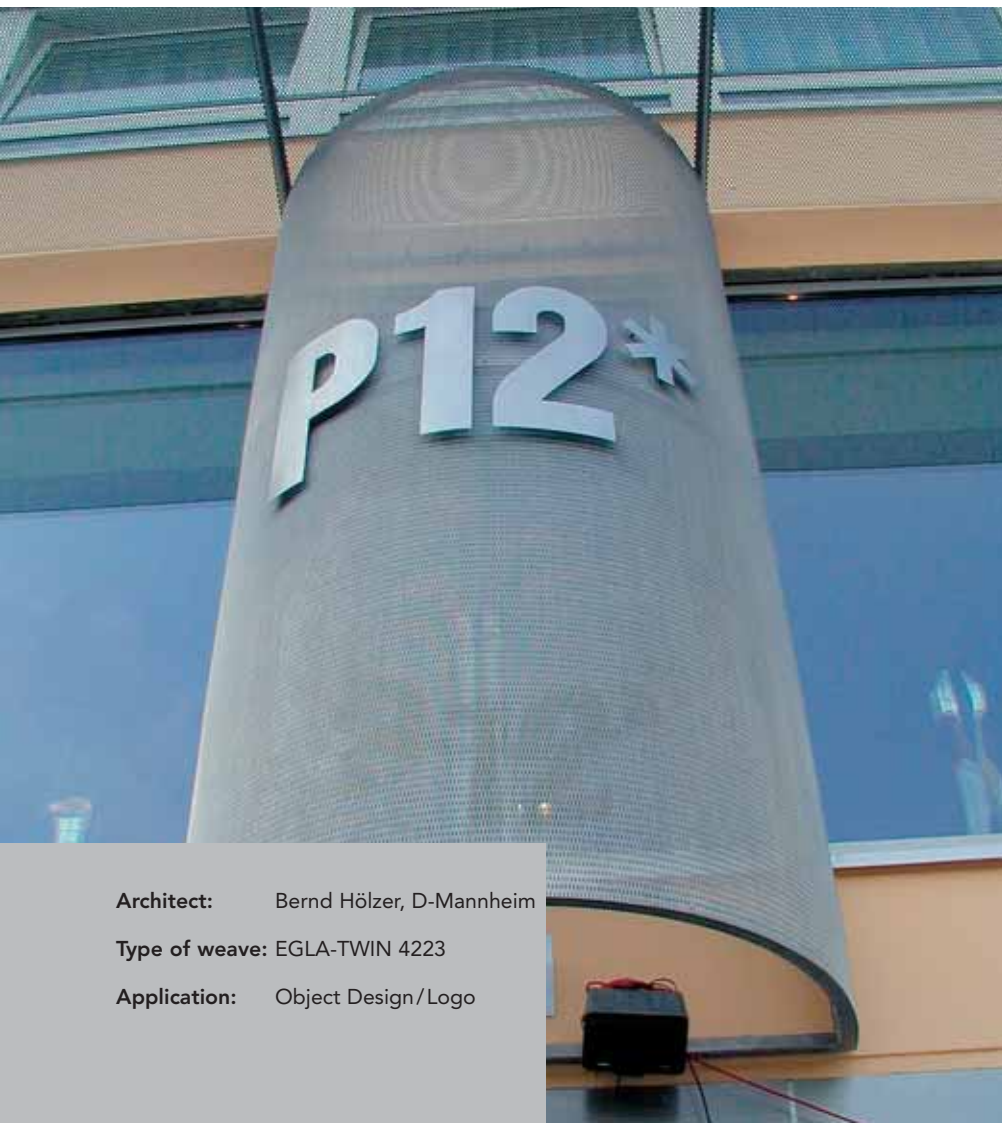
Haver & Boecker manufactured rolls of woven wire cloth ready for fabrication and installation.

### CHALLENGE

- Different cable pitches on panel heights
- Protection from vandalism

### SOLUTION

- Specialist development of specification with variable cable pitches on panel heights.



**Architect:** Bernd Hölzer, D-Mannheim

**Type of weave:** EGLA-TWIN 4223

**Application:** Object Design/Logo

## P12\*, MANNHEIM

Haver & Boecker worked out the concept together with the architect and delivered ready-to-install elements.

### CHALLENGE

- Cylindrical advertising medium to the façade, presentation table, doormat
- Column and Wall Panelling

### SOLUTION

- Selection of suitable weave types and design of fixing solutions
- Design and manufacture of metal framework and lettering



**Architect:** Heiner Babon, F-Paris  
**Type of weave:** DOKAWELL-MONO 3291  
**Application:** Fence for an enclosure

## PARC ZOOLOGIQUE DE THOIRY

Haver & Boecker delivered ready-to-install fabricated elements and provided on-site installation assistance.

## CHALLENGE

- Sufficient transparency
- Anti-climb gibbon-proof woven wire cloth
- Bespoke vertical fixing detail

## SOLUTION

- Selection of a dense weave type
- Horizontal tensioning of the elements
- Actual size prototype made to ascertain the amount of tension required



**Architect:** Niek Kemp, NL-Amsterdam

**Type of weave:** EGLA-MONO 4491

DOKA-MONO 1601

**Application:** Object Design



## ALBEDO, SCULPTURE-BIENNIAL MÜNSTERLAND 2003

Haver & Boecker translated the architect's idea, fabricated the woven wire cloth and conducted the installation of the total construction.

### CHALLENGE

- Walk-in pavilion
- Translation of the artistic demand: representation of the complexity of perception
- Creation of moiré-effects
- Colour design corresponding to the architect's guideline

### SOLUTION

- Computerized animation and supply of samples
- Segments in differing height using layers of mesh in different orientations
- Arrangement and alignment of suitable weave types
- Powder coating of all prefabricated parts in the desired colour

## NATIONAL GARDEN SHOW OELDE 2001

Haver & Boecker conducted on-site measuring, manufacturing, fabrication and installation of the wire cloth elements.

### CHALLENGE

- Partition screens with moiré-effect
- Visually light in construction

### SOLUTION

- Double skin of woven wire cloth achieving moiré-effect
- Connection of the wire cloth elements using spacers
- Lateral mounting using vertical profiles



**Architect:** BW & P Landschaftsarchitekten, D-Cologne

**Type of weave:** DOKA-MONO 1601

**Application:** Partition

## EXHIBITION STAND DAIMLERCHRYSLER, MOTORSHOW ESSEN

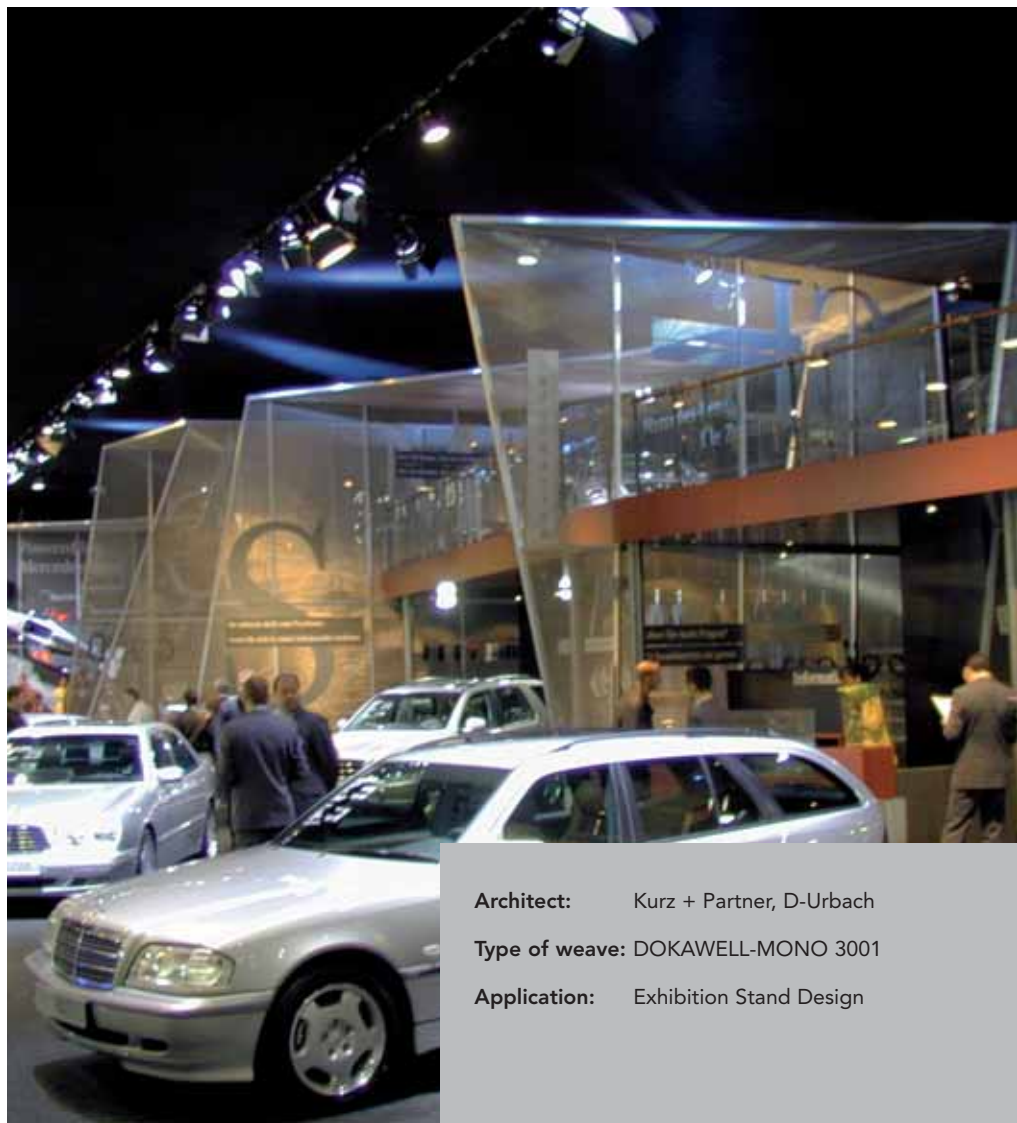
Haver & Boecker manufactured cut-to-size elements ready for fabrication and installation.

### CHALLENGE

- Panelling to the floor, walls and ceilings
- Shiny surface effect

### SOLUTION

- Glittering reflective surface created using a special weave type



**Architect:** Kurz + Partner, D-Urbach

**Type of weave:** DOKAWELL-MONO 3001

**Application:** Exhibition Stand Design



**Architect:** Architekturbüro Böhm,  
D-Cologne

**Type of weave:** ECLA-TWIN 4243

**Application:** Elevator Panelling

## CITY LIBRARY ULM

Haver & Boecker manufactured cut-to-size elements ready for fabrication and installation.

## CHALLENGE

- Panelling of the elevator shaft
- Optical Design

## SOLUTION

- Selection of a suitable weave type



## IMPROVING ACOUSTICS.

Together with state-of-the-art acoustic fleece Haver & Boecker Woven Wire Cloth offers brilliant sound absorbing features. The acoustic material is concealed behind high-quality stainless steel mesh creating a sophisticated and elegant ambience.

**Architect:** Peter Hübner, D-Cologne  
Günter Hoffmann, D-Konz

**Type of weave:** ALTERNA 6012

**Application:** Interior Design/Acoustics

## CALL-CENTER ÖRAG, DÜSSELDORF

Haver & Boecker delivered pre-fabricated elements.

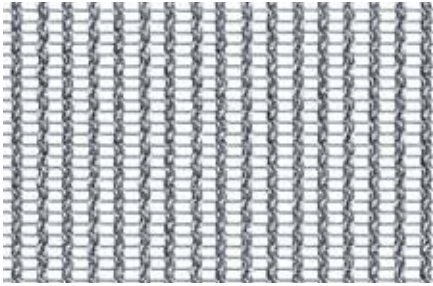
## CHALLENGE

- Improvement of the room acoustics
- Optical panelling

## SOLUTION

- Woven wire cloth elements with special sound absorber
- Assembly on wooden frames

# MESHES. WAITING FOR YOUR IDEAS.

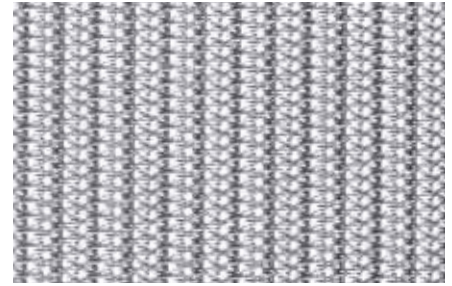


**MINIFLEX 8135**

$G^1$ (kg/m <sup>2</sup> )	$A_o^2$ (%)
2.1	39

**FLEXOMESH 9246**

$G^1$ (kg/m <sup>2</sup> )	$A_o^2$ (%)
3.3	

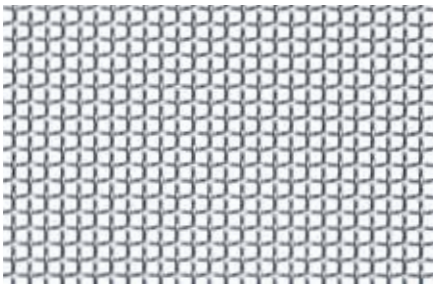
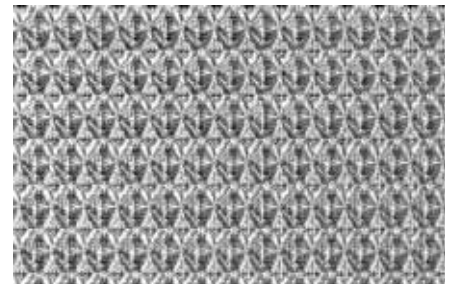


**LARGO-PLENUS 2014**

$G^1$ (kg/m <sup>2</sup> )	$A_o^2$ (%)
11.6	7

**STRUCTURA 6501**

$G^1$ (kg/m <sup>2</sup> )	$A_o^2$ (%)
1.1	22

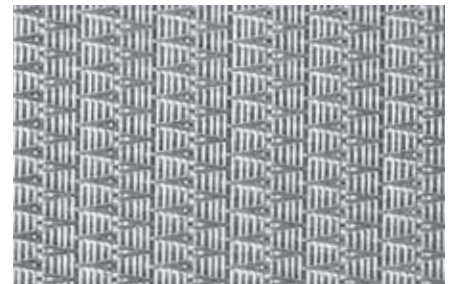


**DETENTION 7016**

$G^1$ (kg/m <sup>2</sup> )	$A_o^2$ (%)
3.0	44

**STRUCTURA 6502**

$G^1$ (kg/m <sup>2</sup> )	$A_o^2$ (%)
1.8	



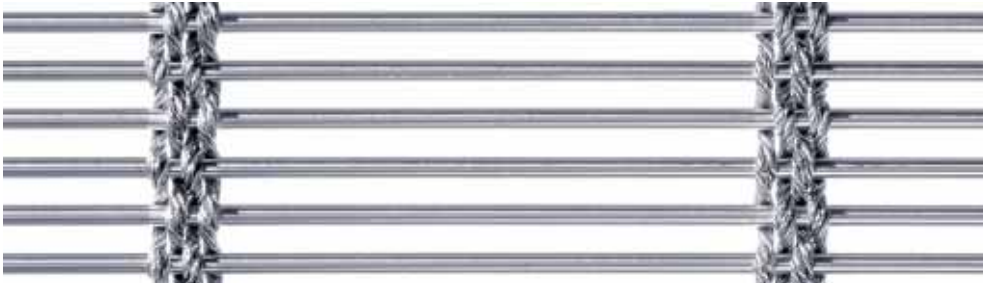
<sup>1)</sup> G=Weight, <sup>2)</sup> A<sub>o</sub>=Open Area

## ARCHITECTURAL WIRE CLOTH

Architecture presents itself in many forms. We have developed a wide range of meshes to cover the diverse nature of the applications. The choice of warp and weft wire generates many different patterns each with specific optical features. The use of different materials and surface treatments can create brilliant, shimmering or even coloured finishes to the mesh.

The examples are a representative selection of some of our standard weaves on a scale of 1:1.

Of course we do develop individual types of weave, too. Please visit our website at [www.weavingideas.com](http://www.weavingideas.com) where you will find more information and images of Haver & Boecker Architectural Wire Cloth.

**MULTI-BARRETTE 8124**

$G^1$ (kg/m <sup>2</sup> )	$A_o^2$ (%)
10.1	45

**EGLA-TWIN 4223**

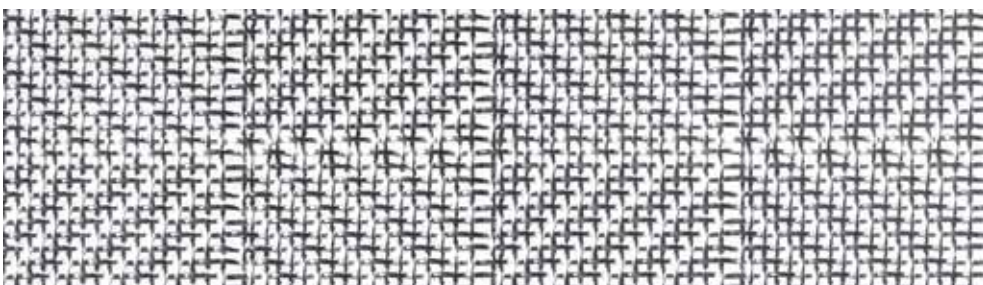
$G^1$ (kg/m <sup>2</sup> )	$A_o^2$ (%)
7.2	43

**DOKAWELL-MONO 3381**

$G^1$ (kg/m <sup>2</sup> )	$A_o^2$ (%)
6.4	55

**MULTI-BARRETTE 8106**

$G^1$ (kg/m <sup>2</sup> )	$A_o^2$ (%)
5.2	45

**CHESS 6013**

$G^1$ (kg/m <sup>2</sup> )	$A_o^2$ (%)
3.2	31

**DOKA-MONO 1591**

$G^1$ (kg/m <sup>2</sup> )	$A_o^2$ (%)
5.9	79

<sup>1)</sup> G=Weight, <sup>2)</sup> A<sub>o</sub>=Open Area

**Belgium:**

**HAYER BELGIUM S.A.**

Rue des Gaillettes 9  
B-4651 BATTICE  
Téléphone: 087-69 29 60  
Fax: 087-69 29 61  
E-Mail: hbsa@cybernet.be

**France:**

**HAYER & BOECKER Toiles Métalliques**

7, rue Sainte Catherine  
F-24100 BERGERAC  
Téléphone: 5-53 24 93 13  
Fax: 5-53 24 95 99  
E-Mail: haver.toiles@wanadoo.fr  
Internet: les-tissus-metalliques.com

**Spain:**

**HAYER & BOECKER Telas Metalicas**

Avda. Les Bobiles, 7  
Casa 2  
E-08850 GAVA (Barcelona)  
Teléfono: 93-6 62 63 55  
Fax: 93-6 62 90 59  
E-Mail: haverboecker@telefonica.net  
Internet: tejerideas.com

**Great Britain:**

**H&B Wire Fabrications Ltd.**

30-32 Tatton Court  
Kingsland Grange, Woolston  
GB-WARRINGTON, Cheshire WA1 4RR  
Phone: 01925-81 95 15  
Fax: 01925-83 17 73  
E-Mail: sales@hbwf.co.uk  
Internet: www.hbwf.co.uk

**U.S.A.:**

**W.S. TYLER – Wire Cloth Products**

8570 Tyler Boulevard  
USA-MENTOR, Ohio 44060  
Phone: 440-974-1047 + 800-321-6188  
Fax: 440-974-0921  
E-Mail: wstyler@wstyler.com  
Internet: www.wstyler.com

**Canada:**

**W.S. TYLER CANADA LTD.**

225 Ontario Street  
CAN-ST. CATHARINES, Ontario L2R 7B6  
Phone: 905-688-2644 + 800-325-5993  
Fax: 905-688-4733  
E-Mail: wstsales@wstyler.on.ca  
Internet: www.wstyler.on.ca

**HAYER & BOECKER**



**DIE DRAHTWEBER**

HAYER & BOECKER  
Ennigerloher Straße 64  
D-59302 OELDE  
Germany

Phone: +49-(0) 25 22-30 684  
Fax: +49-(0) 25 22-30 767  
E-Mail: architektur@haverboecker.com  
Internet: www.weavingideas.com